

sune
KOS

Cell 15

The new era
of cellulite
treatment

DESIGNED to
RECREATE





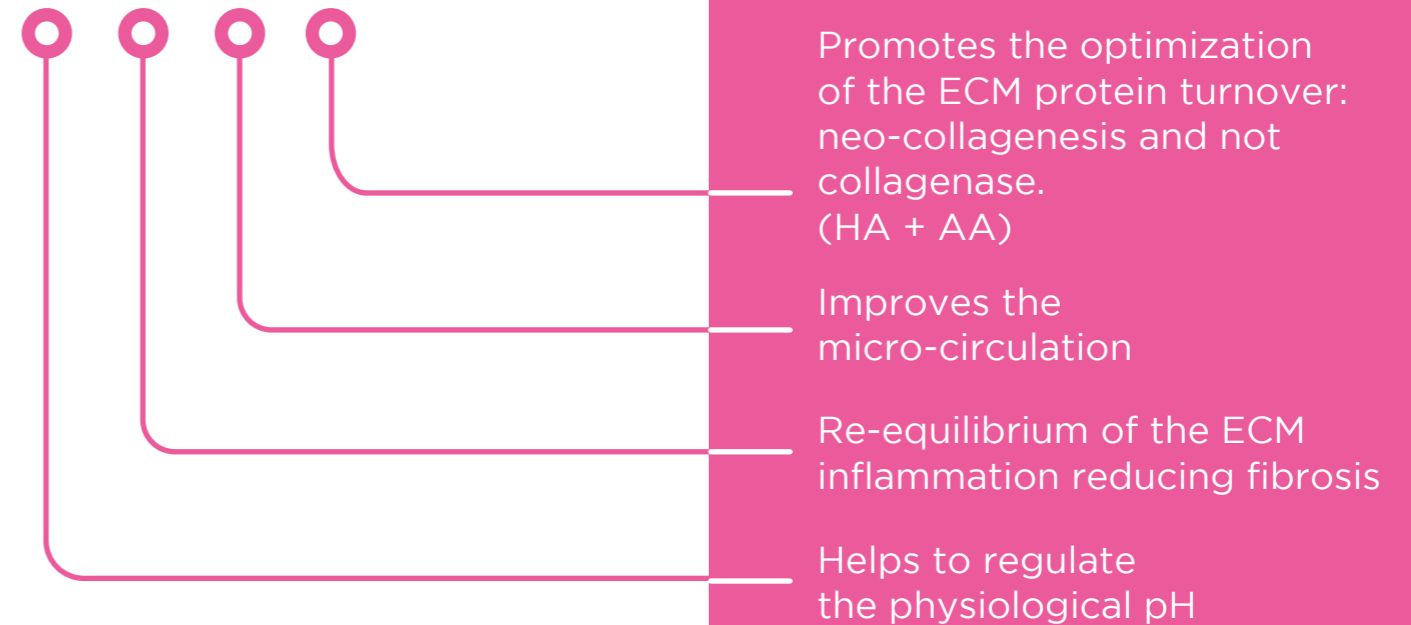
Cell 15

WHAT'S NEW ABOUT CELLULITE?

In the evolutionary phases (I-IV) of cellulite, clinically called “Edematous Fibrosclerotic Panniculopathy” (EFP) the intradermal therapy was mainly addressed to the treatment of edema and microcirculation.

Today, numerous pathophysiological considerations demonstrate the need to intervene also and especially on the Extra Cellular Matrix (ECM).

The synergy of the mix of Hyaluronic Acid (HA), Amino Acids (AA) and an Alkaline Solution^[1]:



This new approach is designed to restore the homeostasis of the skin and adipose tissue thanks to a non-lipoclastic or lipolytic method.

REBUILDING rather than DESTROYING

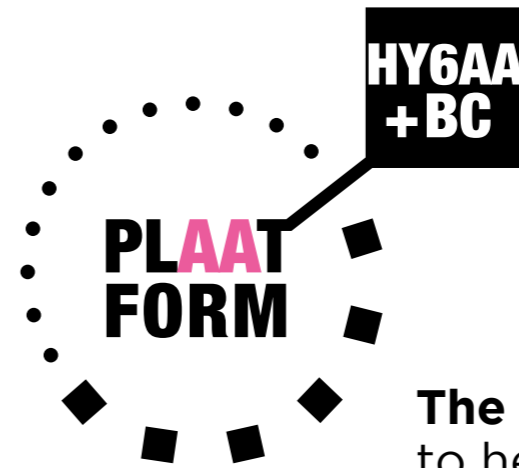


Cell 15

THE
PRODUCT



Reconstituted
as 15 ml



The one and only formula
to help in counteracting acidosis
and restructuring the Extra Cellular Matrix.
For a successful, non-invasive treatment of cellulite.

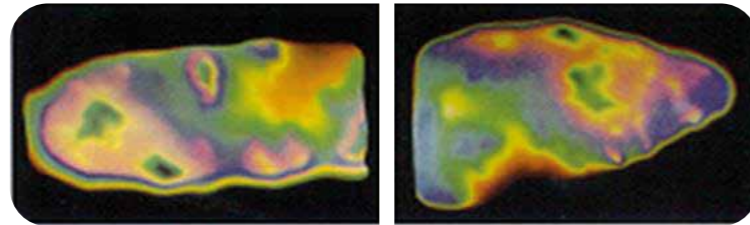
**Low molecular
weight Hyaluronic
Acid (HA)**
Targeted stimulating
action on fibroblasts

Amino Acids (AA)
To favour the
production of
collagen and elastin

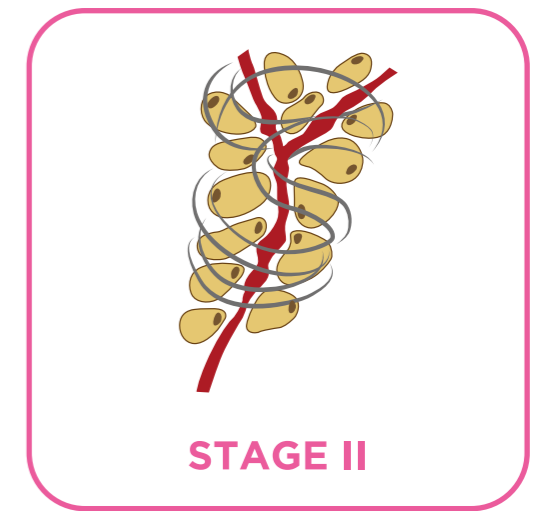
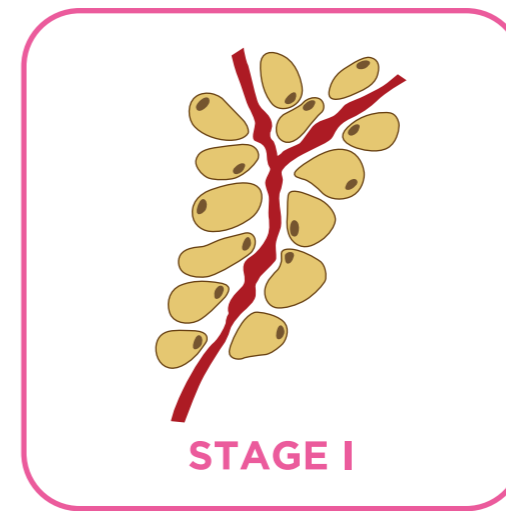
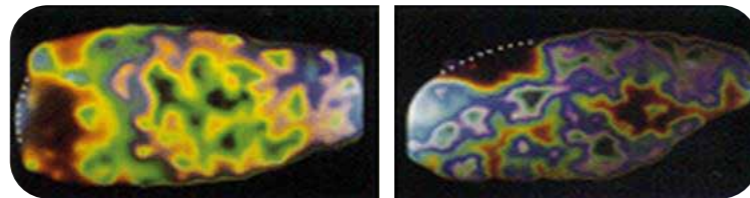
**Carbonate and
Bicarbonate salts**
For the rebalancing
of typical acidosis in
latent inflammation
that characterizes
both the early and
late stages of cellulite

STAGES I AND II
OF CELLULITE

Stage 1



Stage 2

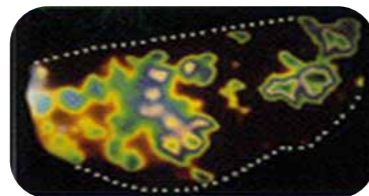


Stages I and II of cellulite present an edemato - inflammatory condition of the tissue associated with hypo-oxygenation and acidosis.

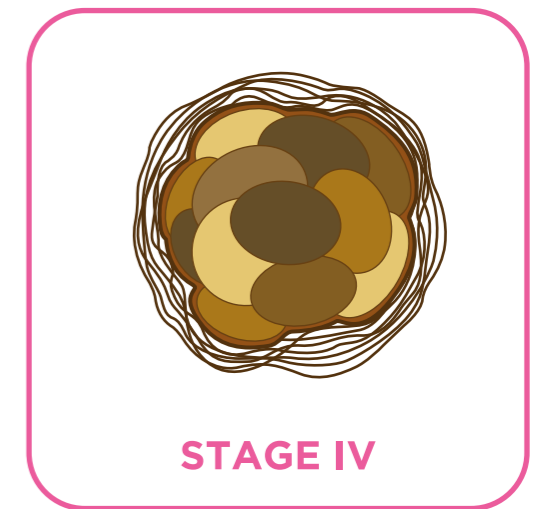
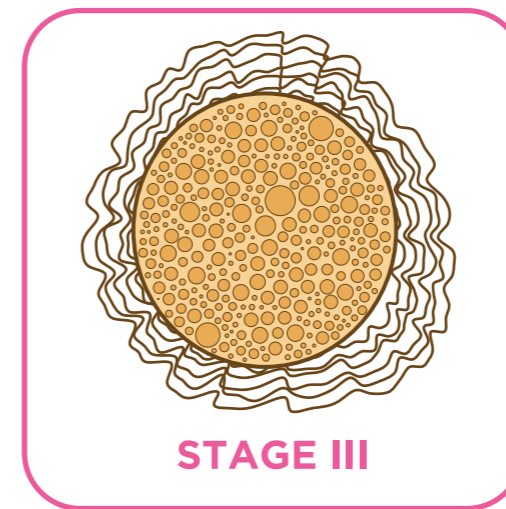
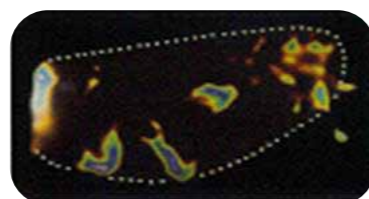
Stages I and II can be treated with ATL-n Technique (Across Tension Lines needle).

STAGES III AND IV
OF CELLULITE

Stage 3



Stage 4



The pathogenetic mechanism of late stage of cellulite is mostly related to the aging phenomena of tissues (inflamm-aging / acidosis) already degenerated in fibrosis and subsequently in sclerosis. This condition is often related to menopause when the decrease of the **hormones** is worsening the process.

Stages III and IV can be treated with Cannula and ATL-c Technique (Across Tension Lines cannula).

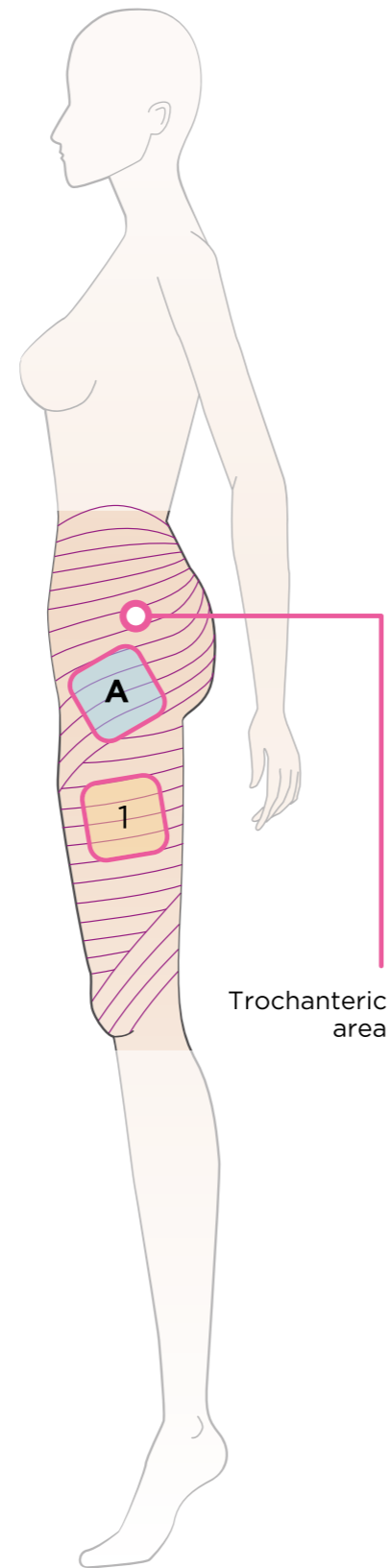


Cell 15

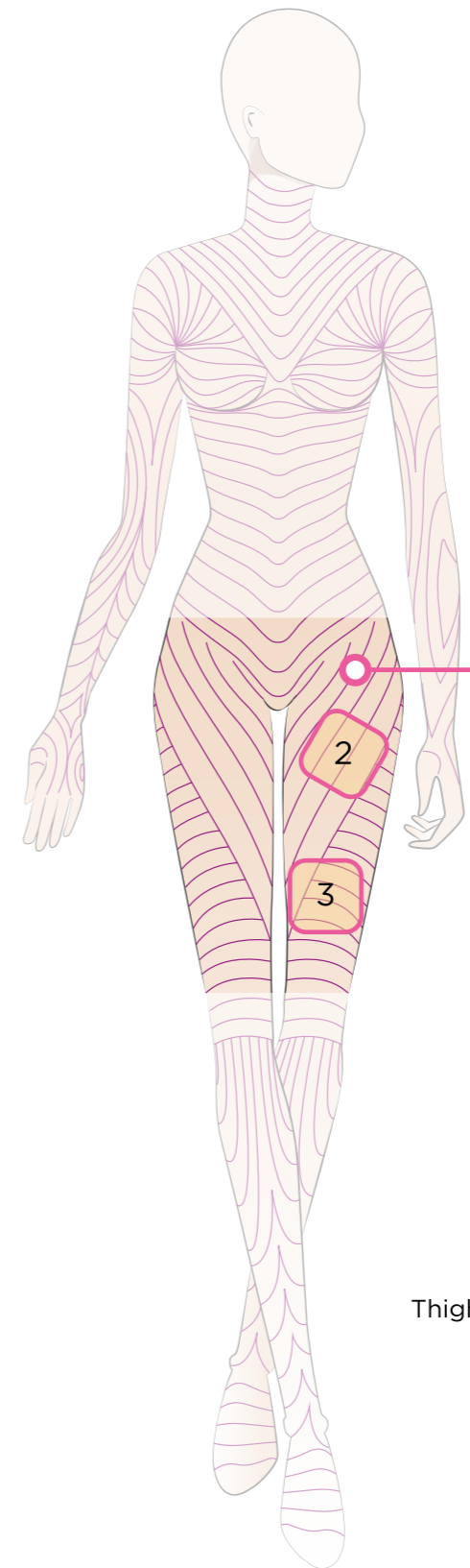
FOLDING LINES IN CELLULITE TREATMENT

According to studies on the “folding lines”^[2], the injection rationale is to follow ideal orthogonal lines on the natural folding ones

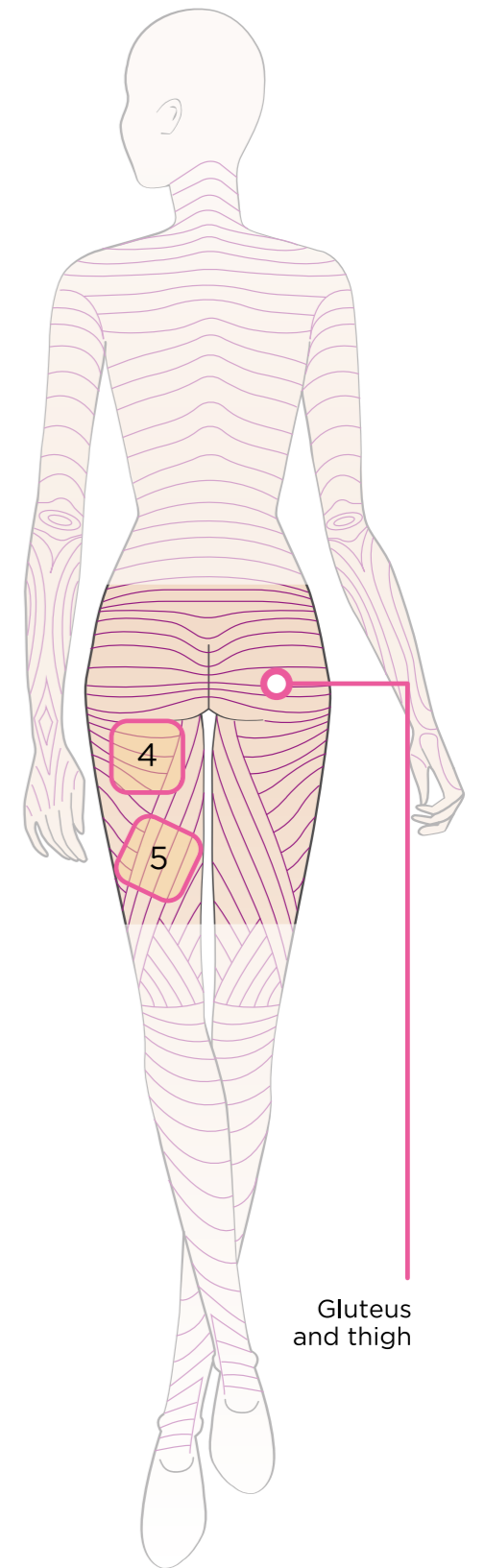
INJECTION SCHEME:
3 Areas per side
(2.5 ml per Area → 7.5 ml per leg).



Trochanteric
area



Thigh



Gluteus
and thigh

Always inject Area **A** in combination with

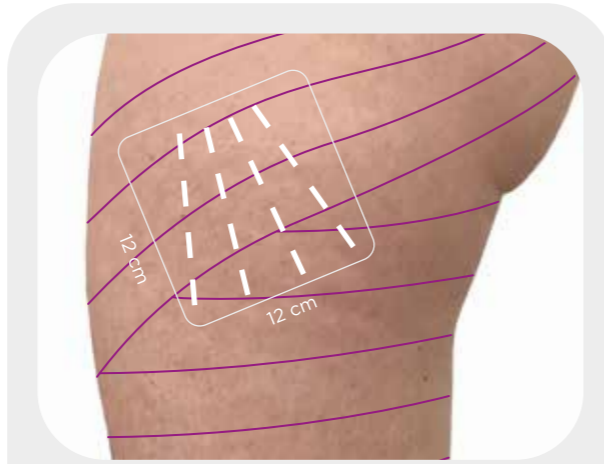
two other areas choosing between Area

1 or **2** or **3** or **4** or **5**

looking at the needs of the patient.

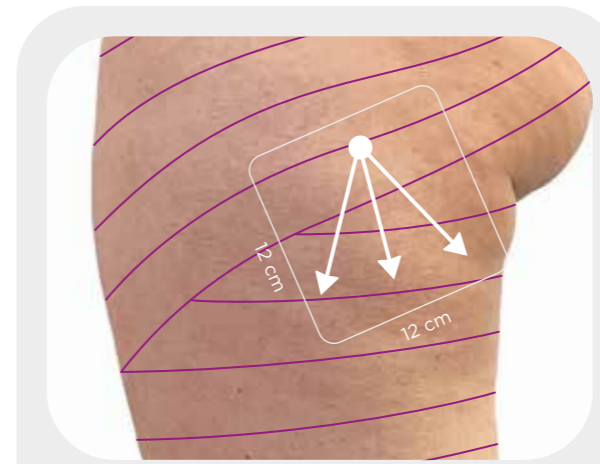
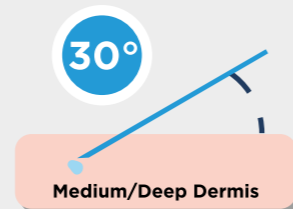
2.5 ml per Area

STAGES I AND II OF CELLULITE



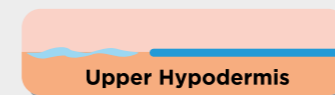
ATL-n Technique Needle [1]

- Needle 12mm, 30G
- Needle inclination 30°
- Medium Deep Dermis
- 0.15 ml per point
- Perpendicularly to Folding Lines



ATL-c Technique Cannula [1]

- Cannula 27G and 40-50 mm or 22G and 50-70mm
- Deep Dermis Injection
- Fan Technique
- 0.8 ml per injection



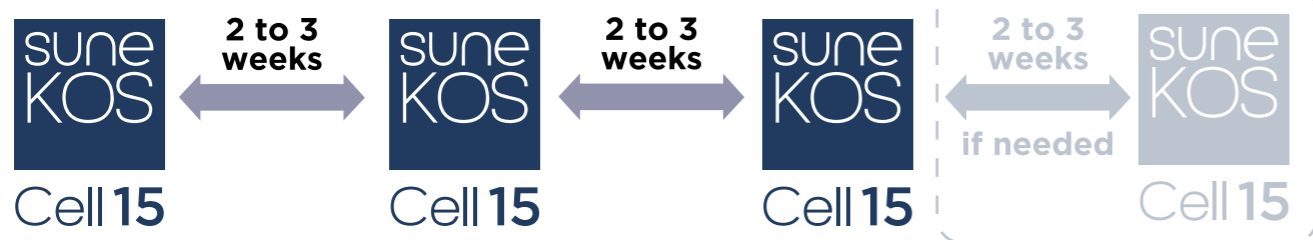
STAGES III AND IV OF CELLULITE



Cell 15

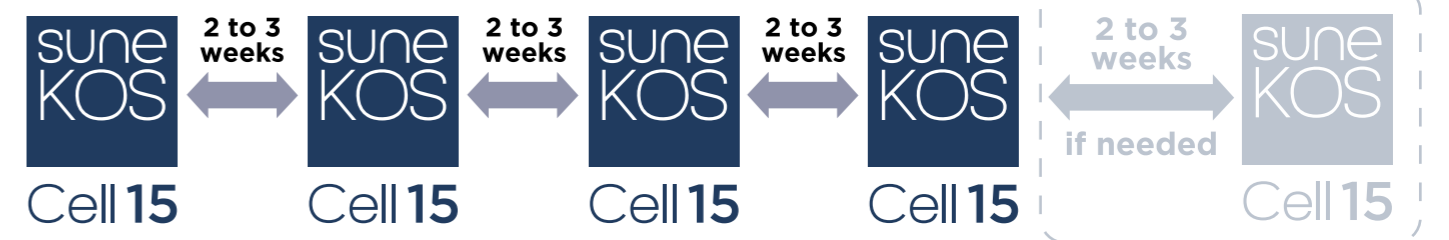


Cell 15



Maintenance
1 or 2 sessions
after 4 or 6 months

Repeat the
full cycle
every 12 months



Maintenance
1 or 2 sessions
after 4 or 6 months

Repeat the
full cycle
every 12 months

BEFORE

AFTER



Courtesy by Elena Fasola MD

BEFORE

AFTER



Courtesy by Elena Fasola MD

BEFORE

AFTER



Courtesy by Elena Fasola MD

BEFORE

AFTER



Courtesy by Mark Holmes MD

STAGES III AND IV OF CELLULITE



Cell 15

Preliminary study on 25 healthy subjects with different stages of cellulite, divided into 2 groups, undergoing Sunekos Cell treatment.^[3]

Group A

11 subjects with stages I and II cellulite

Group B

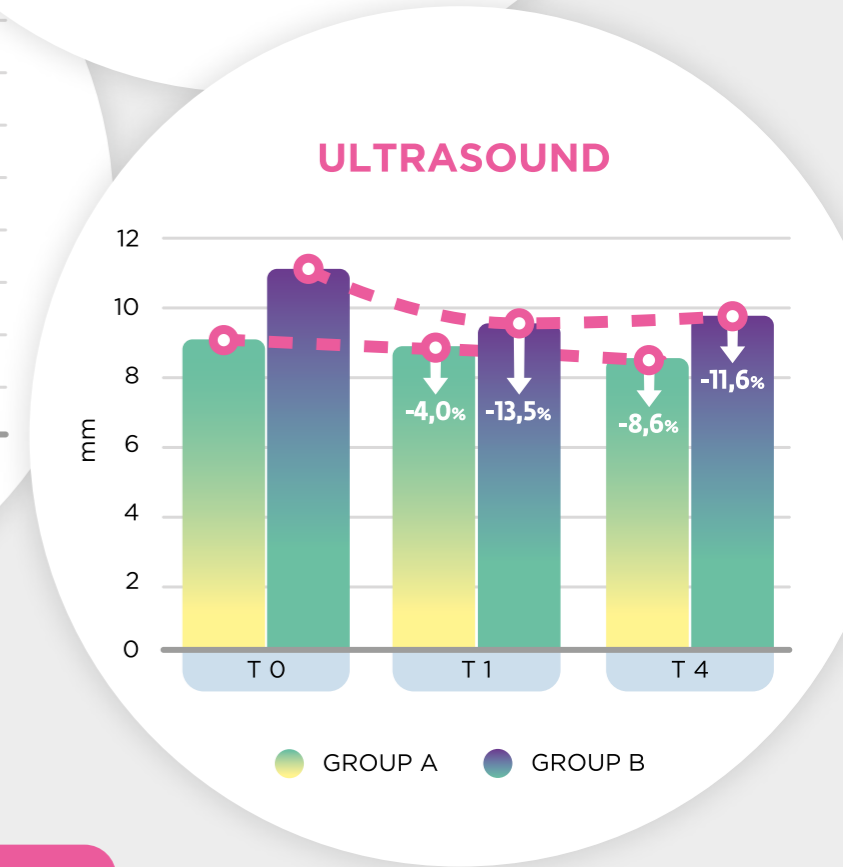
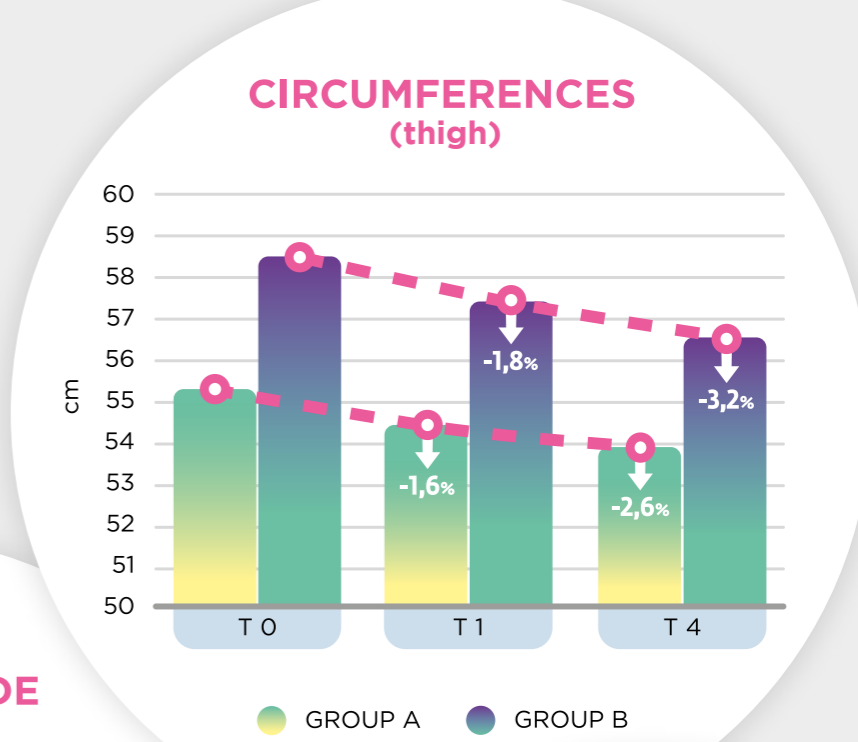
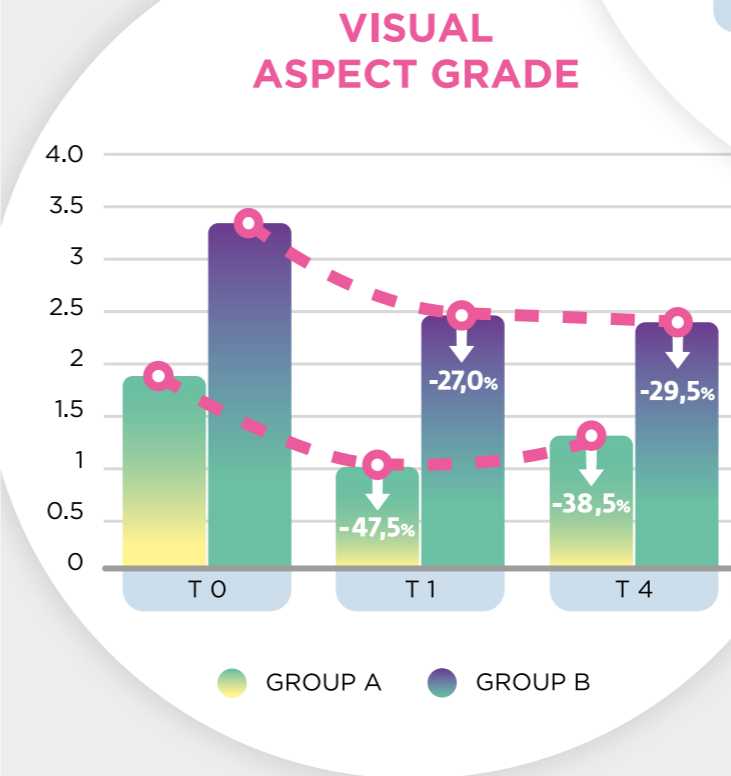
14 subjects with stages III and IV cellulite

Clinical, morphometric and ultrasound evaluation at baseline, 1 month and 4 months after the treatment

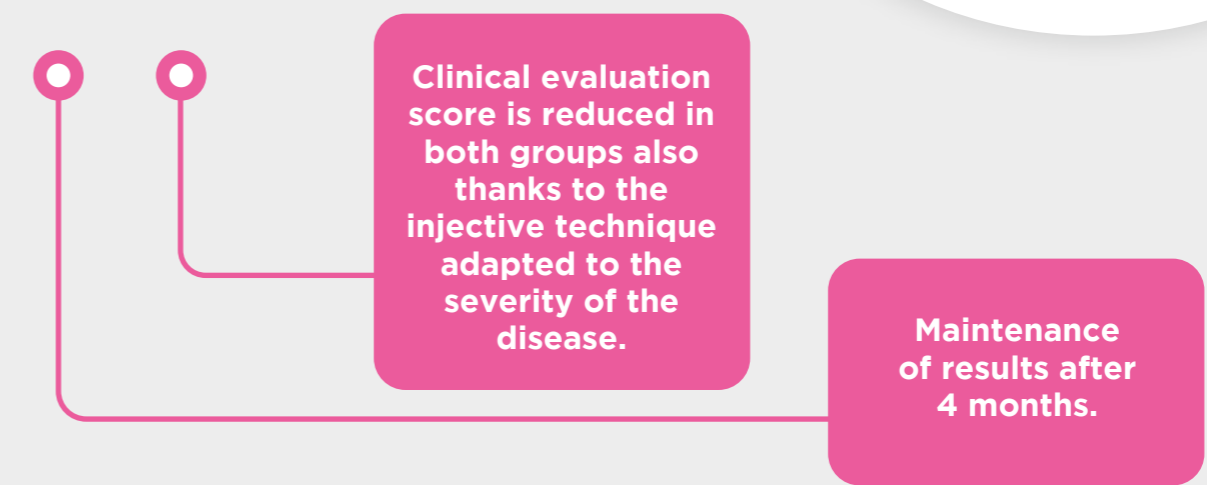
CONCLUSIONS



CLINICAL EVALUATION



RESULTS





Sunekos Cell 15



Registered as
CE Medical Device Class III

One pack of Sunekos Cell 15
contains 1 treatment (15 ml)
to be reconstituted

-1x vial Carbonate/Bicarbonate
-1x bottle low molecular weight (200kD)
Sodium Hyaluronate/Amino Acids (HA/AA)

Bibliography

- [1] Fasola E. Cellulite rebuild rather than destroy - Prime Vol 13 Issue 1 2023
- [2] Lemperle G. et al. The Direction of optimal skin incisions Derived from Striae Distensae - Plast. Reconstr. Surg. 2014 Dec;134(6):1424-1434.
- [3] Sparavigna A. Injective treatment of the so-called cellulite: a new approach aimed at restructuring extracellular matrix of deeper layers of the skin. Efficacy and safety of a new specific formula (part 1 & 2) - JPD Vol 18 n2 2022